



# Restoration Directions: Science Informing the Process

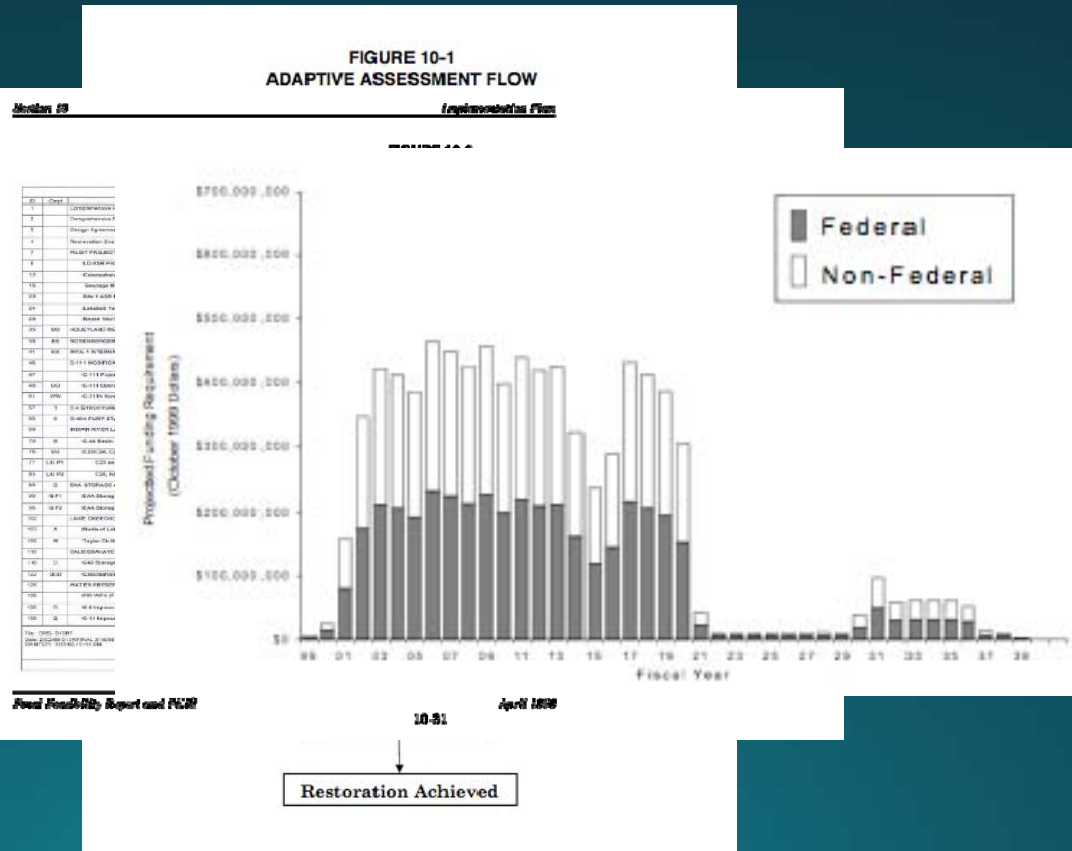
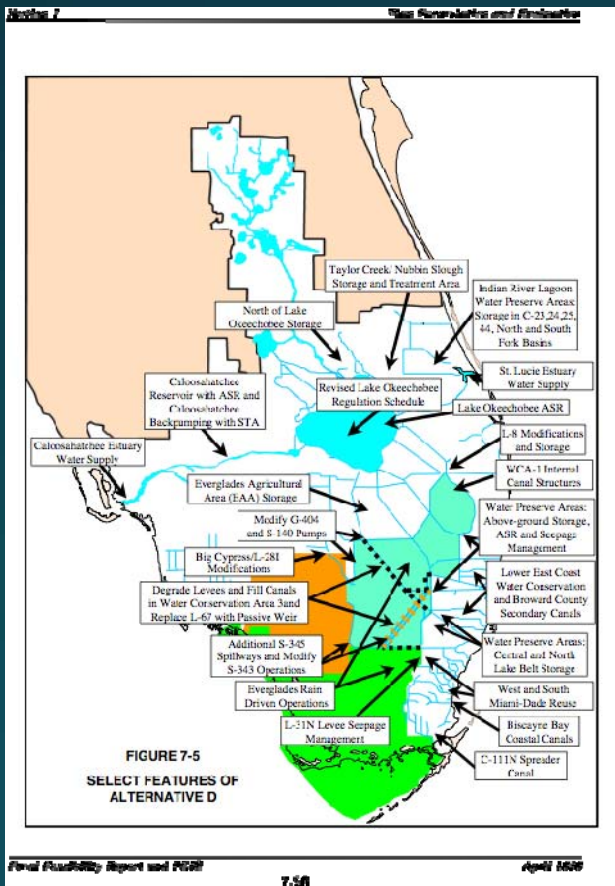
Thomas Van Lent, Ph.D.  
The Everglades Foundation



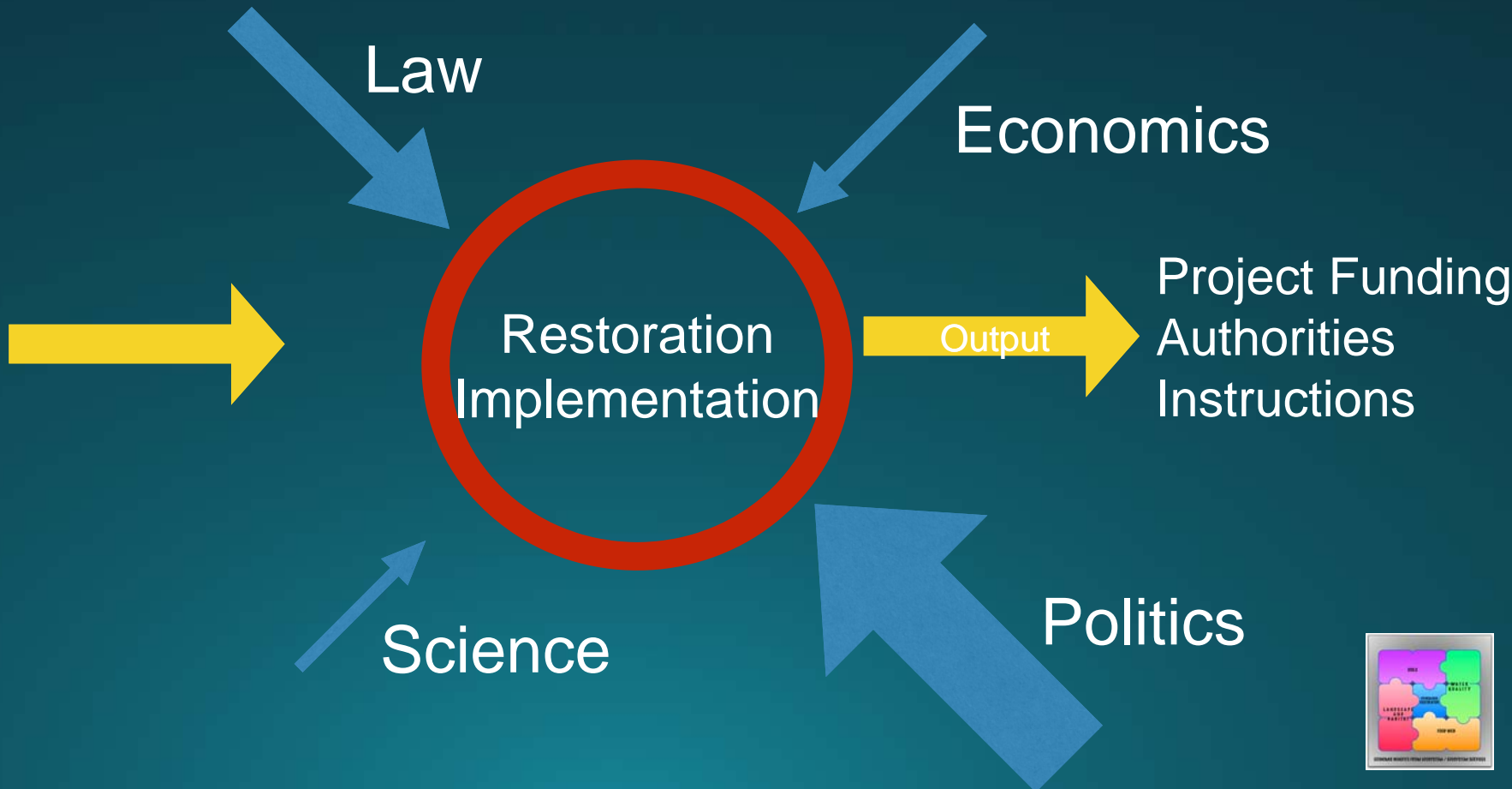
# “The Process”



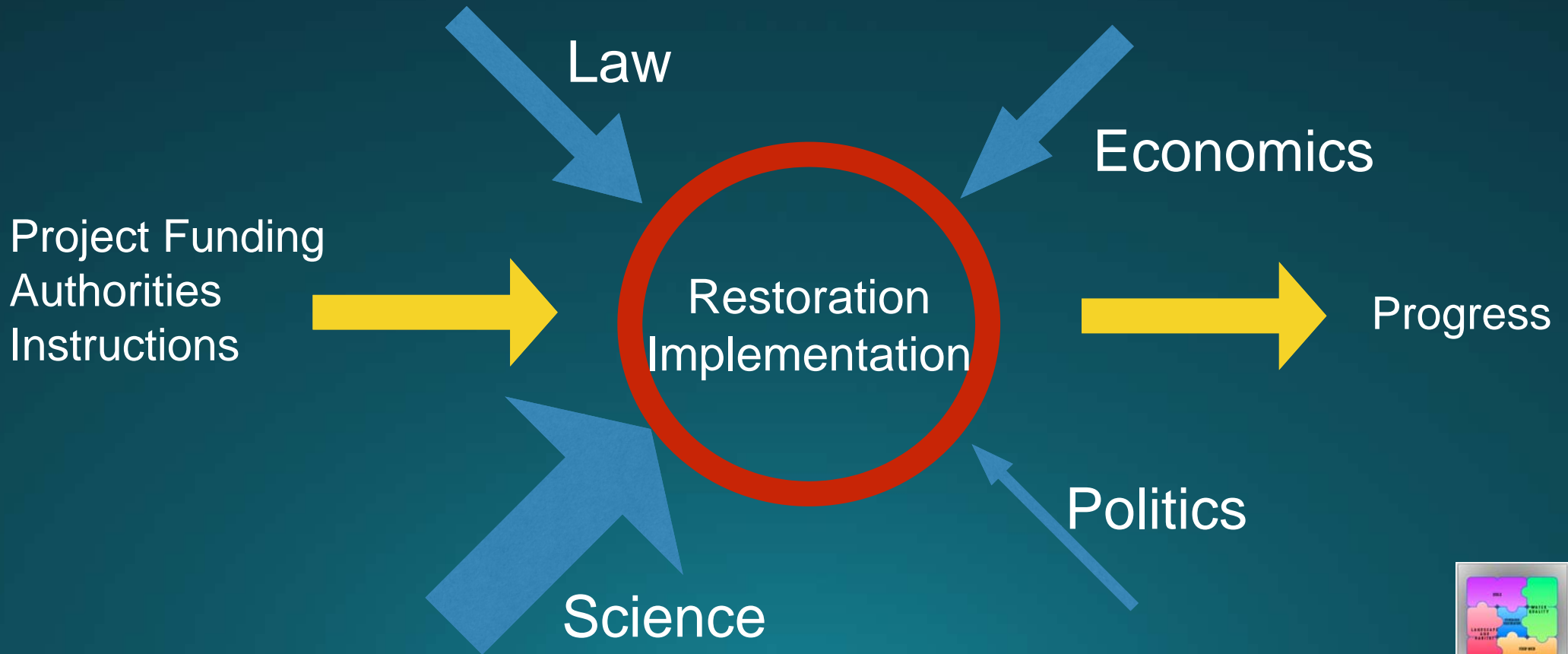
# The Comprehensive Everglades Restoration Plan



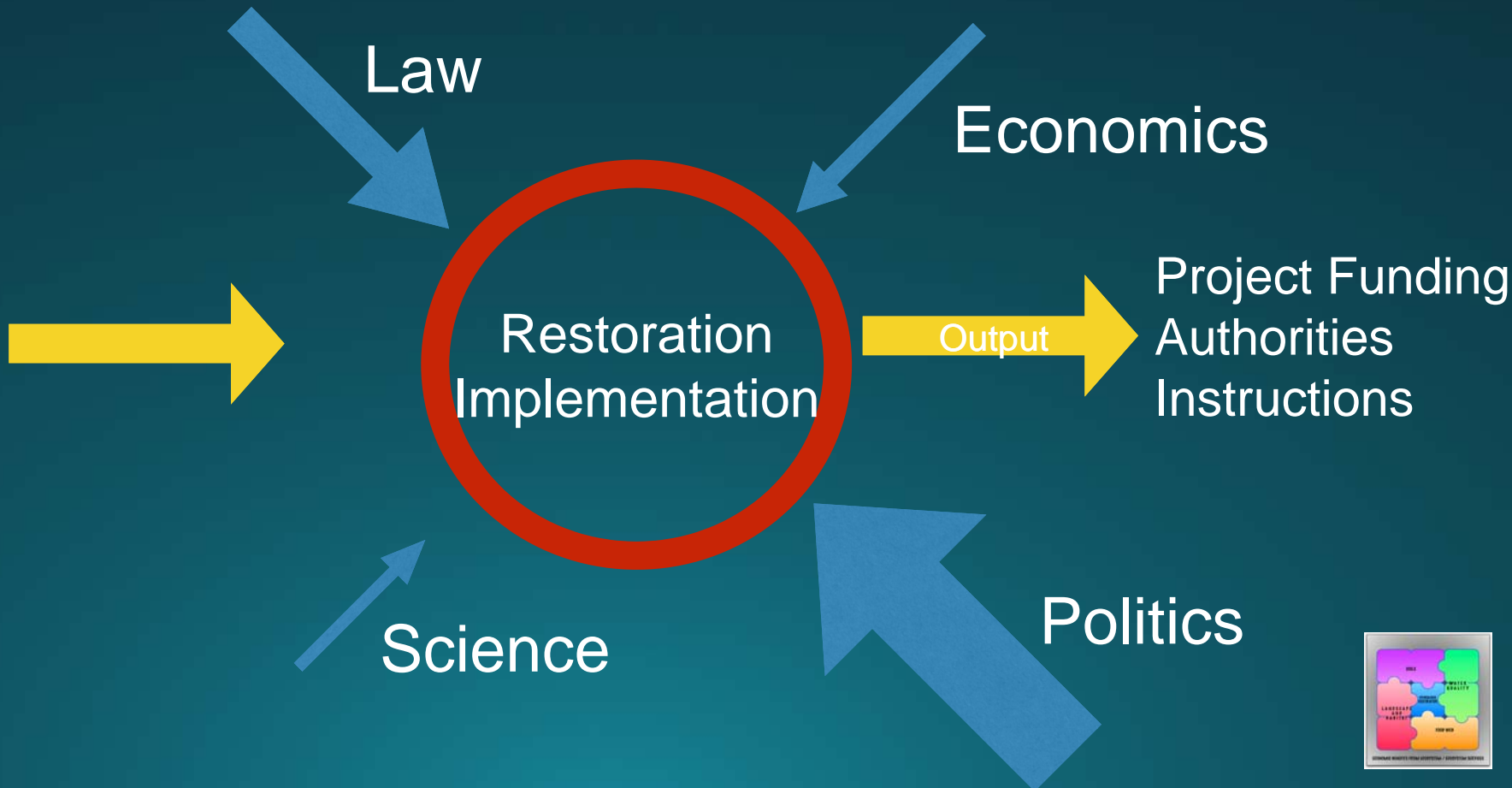
# The Implementation



# Project Implementation



# The Implementation



# Science Informing the “Public”

- “Truth is what people believe”
- People have opinions
- People have deeply-held values
- Audience: Interested, intelligent, but unfamiliar
- Focus on narrative at a very fundamental level



# Science Informing Decision Makers

- Keep in mind that:
  - they mostly operate in the “political ecosystem”
  - if it’s early or issue is new, they will need to build a narrative to justify a course of action
  - they might need to support an existing narrative
  - a very explicitly defined “science solution” sometimes makes life very difficult





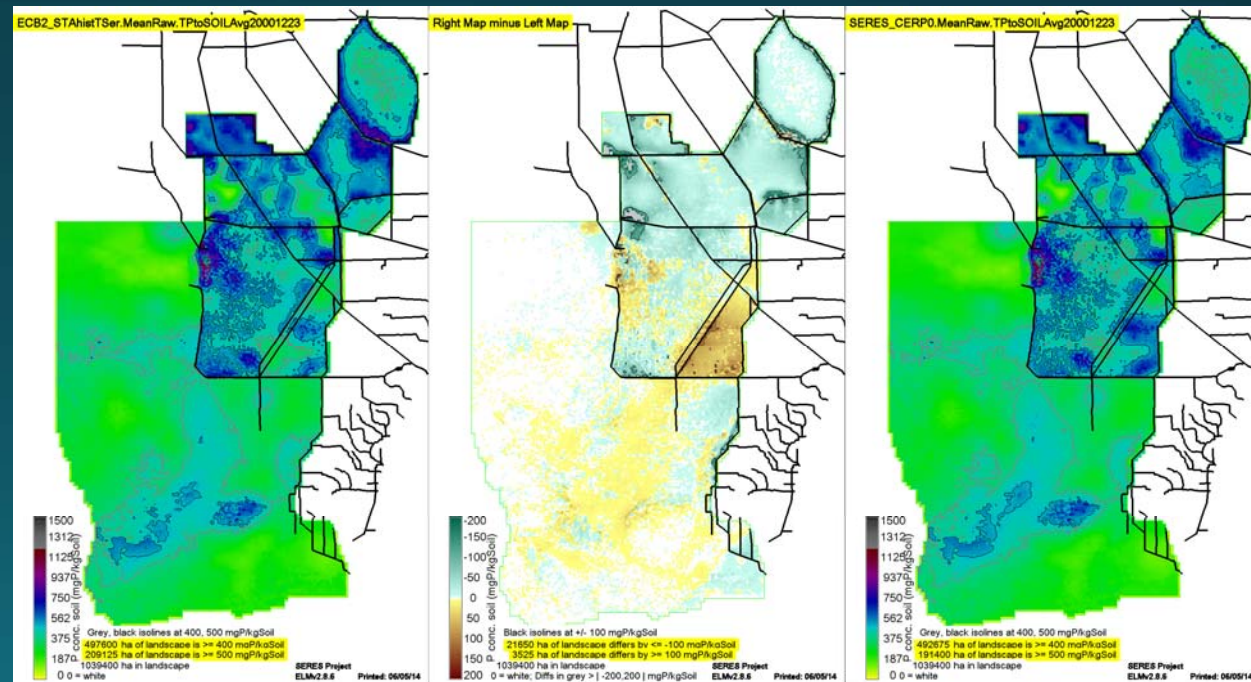
# Informing Decision Makers

- Start with their questions:
  - What are the trade-offs between water quality and water quantity?
  - How clean does the water have to be? What is the incremental benefit and cost of water quality cleanup?
  - If we wait to get the water to 10 ppb, will it be too late for the Everglades? Can you take some risk with water quality while moving forward with other restoration efforts?



# Informing Decision Leaders

- Scientific products are pre-requisites
- Scientific products are not necessarily the end products





# Final Thoughts

- Do not expect decision makers to read scientific and technical documents
- Find creative ways to convey information
- Encourage this skill as part of mentoring
- Recognize the role of science information in process





# Thanks

## SERES Team

James Beerens  
Rena Borkhataria  
Daniel Childers  
Stephen E. Davis  
Steven M. Davis  
Carl Fitz  
Evelyn E. Gaiser  
Judson Harvey  
Hiram Henriquez

Thomas Lodge  
Frank Marshall  
Bobby McCormick  
G. Melodie Naja  
Todd Z. Osborne  
Micheal Ross  
Joel Trexler  
Thomas Van Lent  
Paul R. Wetzel

## Funding

National Park Service,  
Critical Ecosystem  
Studies Initiative

